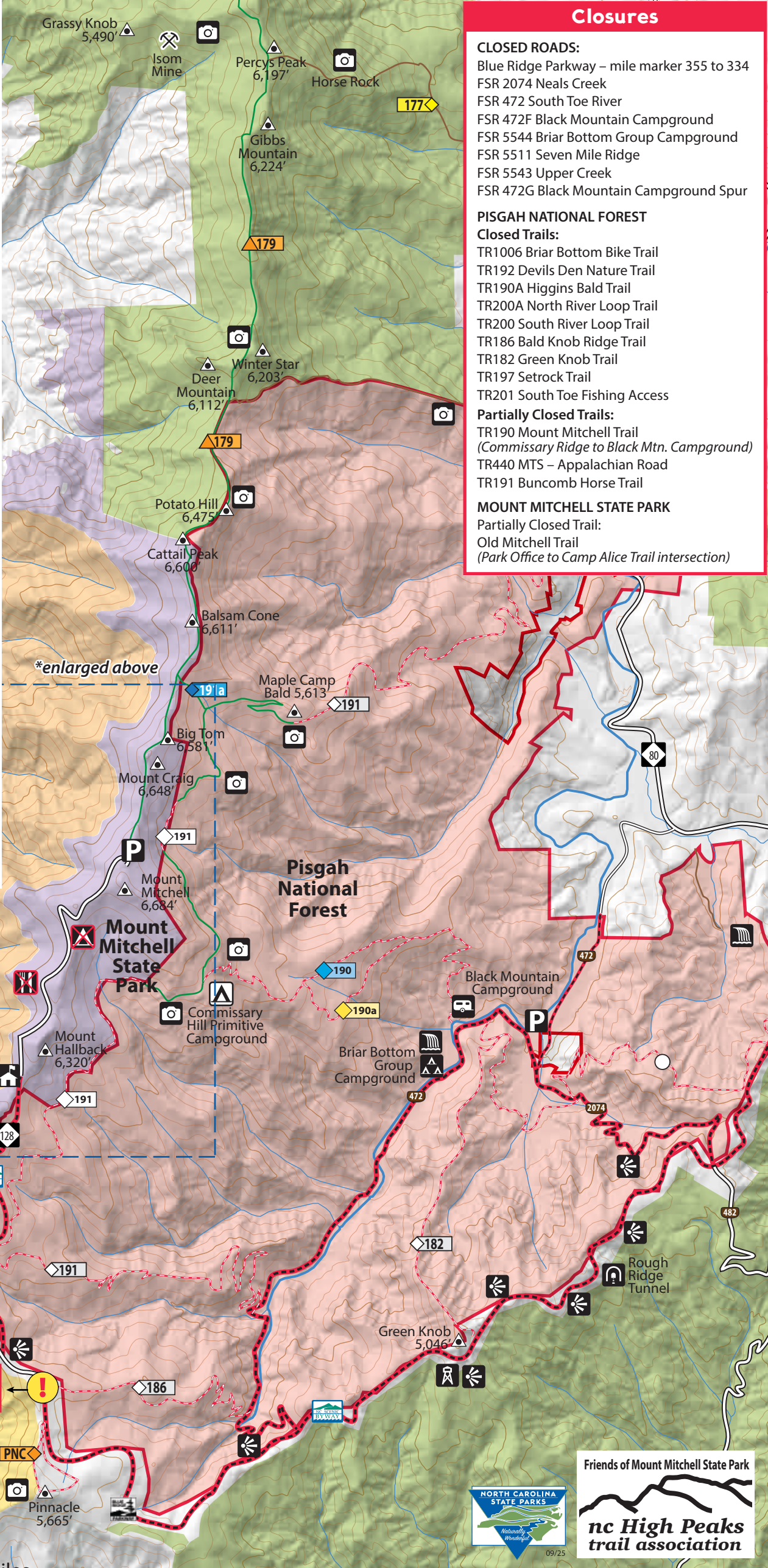
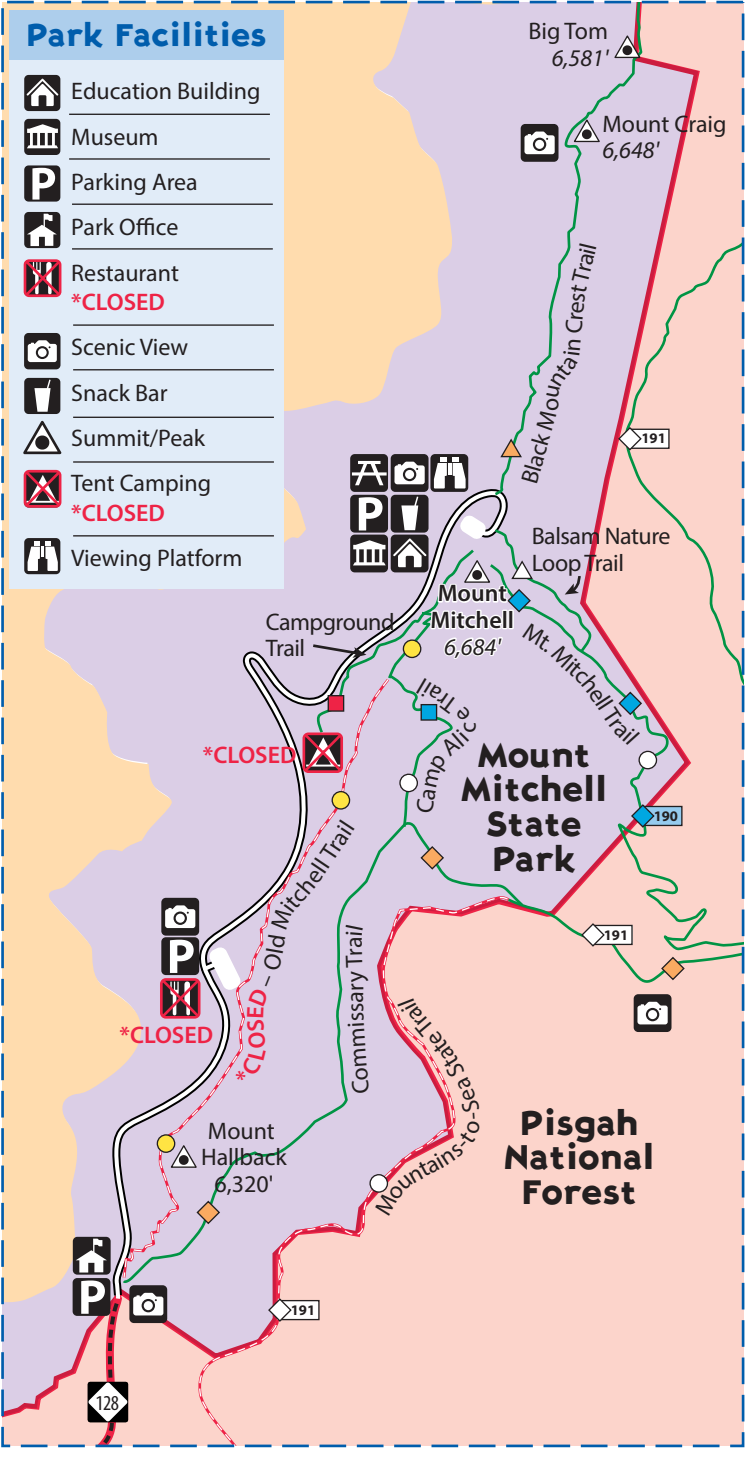


Park Facilities

- Education Building
- Museum
- Parking Area
- Park Office
- Restaurant
- \*CLOSED
- Scenic View
- Snack Bar
- Summit/Peak
- Tent Camping
- \*CLOSED
- Viewing Platform



Closures

**CLOSED ROADS:**  
Blue Ridge Parkway – mile marker 355 to 334  
FSR 2074 Neals Creek  
FSR 472 South Toe River  
FSR 472F Black Mountain Campground  
FSR 5544 Briar Bottom Group Campground  
FSR 5511 Seven Mile Ridge  
FSR 5543 Upper Creek  
FSR 472G Black Mountain Campground Spur

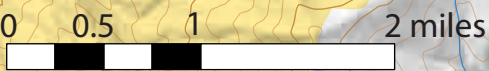
**PISGAH NATIONAL FOREST**  
**Closed Trails:**  
TR1006 Briar Bottom Bike Trail  
TR192 Devils Den Nature Trail  
TR190A Higgins Bald Trail  
TR200A North River Loop Trail  
TR200 South River Loop Trail  
TR186 Bald Knob Ridge Trail  
TR182 Green Knob Trail  
TR197 Setrock Trail  
TR201 South Toe Fishing Access  
**Partially Closed Trails:**  
TR190 Mount Mitchell Trail  
(Commissary Ridge to Black Mtn. Campground)  
TR440 MTS – Appalachian Road  
TR191 Buncomb Horse Trail

**MOUNT MITCHELL STATE PARK**  
**Partially Closed Trail:**  
Old Mitchell Trail  
(Park Office to Camp Alice Trail intersection)

Wilson Boundary  
(No Trespassing)

Asheville Watershed  
(No Trespassing)

Road closed  
No passage



Legend

- Road
  - Open
  - Closed
- Trail
  - Open
  - Closed
- Boundaries
  - Mount Mitchell SP
  - Pisgah National Forest
  - Closed

Mount Mitchell State Park Trails

Mount Mitchell Trail	5.6 miles	difficult	blue	
Commissary Hill	1.5 miles	difficult		
Black Mountain Crest Trail	11.3 miles	difficult	orange	
Mount Craig	1.0 mile	moderate		
Deep Gap	3.8 miles	difficult		
*CLOSED Old Mitchell Trail	2.0 miles	moderate	yellow	
Commissary Trail	2.0 miles	easy	orange	
Camp Alice Trail	0.5 mile	difficult	blue	
Balsam Nature Loop Trail	0.7 mile	moderate	white	
Campground Trail	0.4 mile	easy	red	

National Park Service Trails

\*CLOSED Pinnacle Loop Trail 2.0 miles difficult orange PNC

Pisgah National Forest Trails

Woody Ridge Trail	2.2 miles	difficult	yellow	
Black Mountain Crest Trail	11.3 miles	difficult	orange	
*CLOSED Green Knob Trail	3.2 miles	difficult	white	
*CLOSED Bald Knob Ridge Trail	2.8 miles	moderate	white	
*CLOSED Mount Mitchell Trail	5.6 miles	difficult	blue	
*CLOSED Higgins Bald Trail	1.3 miles	difficult	yellow	
*CLOSED Buncombe Horse Range Trail	17.0 miles	difficult	white	
Big Tom Gap Trail	0.4 mile	difficult	blue	

N.C. State Trails

Mountains-to-Sea State Trail	22.9 miles	difficult	white	
Walker Knob to NC-128	4.6 miles	difficult		
NC-128 to Mount Mitchell	4.5 miles	difficult		
*CLOSED Mount Mitchell to BMCG	5.8 miles	difficult		
BMCG to FS2074	2.0 miles	easy		
FS2074 to NC-80	6.0 miles	moderate		

